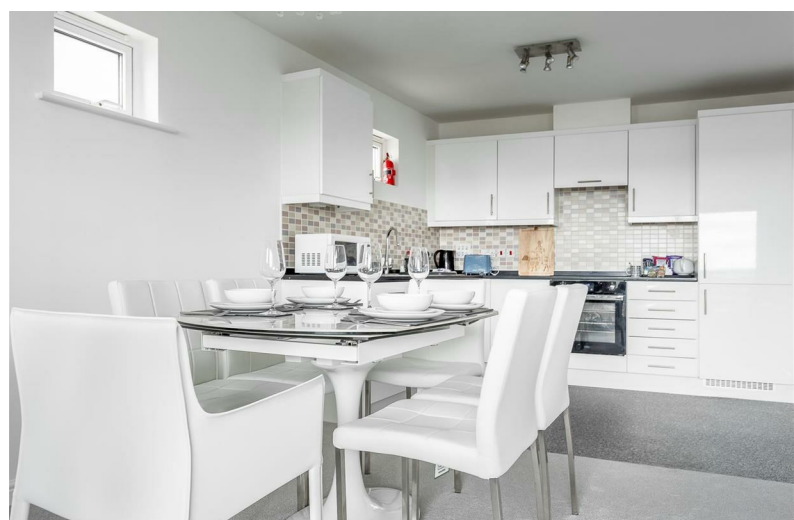


01202 683444

Orchard Plaza, 41 High Street

Poole, Dorset, BH15 1EG

[www.quayliving.co.uk](http://www.quayliving.co.uk)



Norton Way, Poole

Poole, BH15 4GD

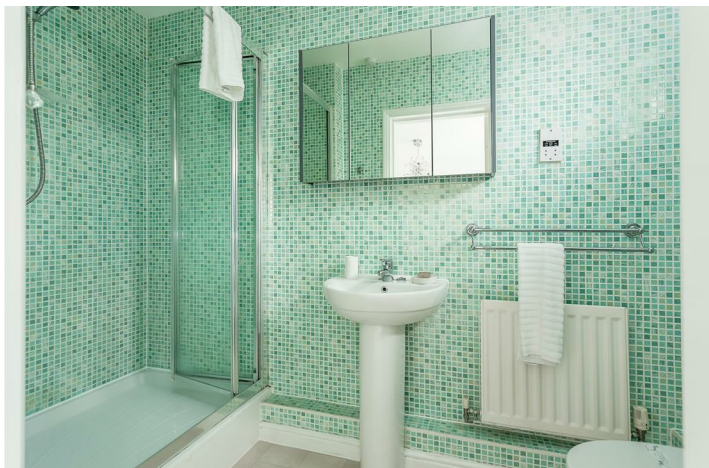
£1,250 PCM



**\*\*3-5 MONTH LET ONLY\*\***

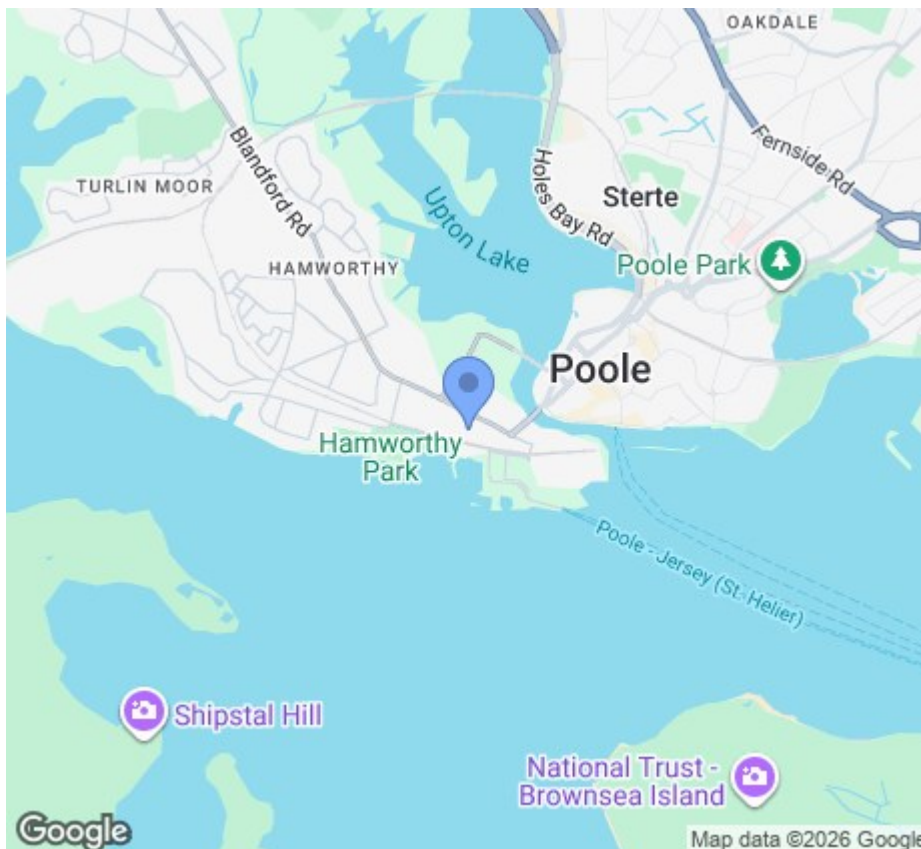
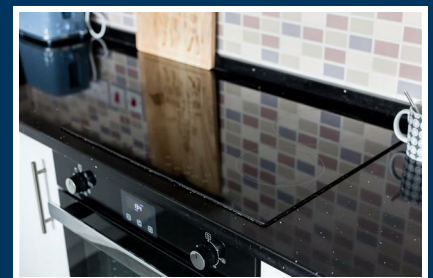
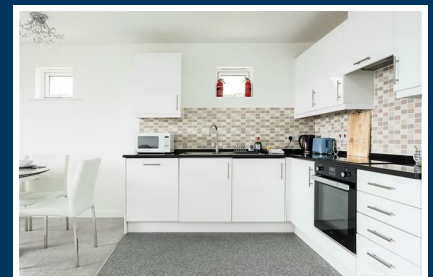
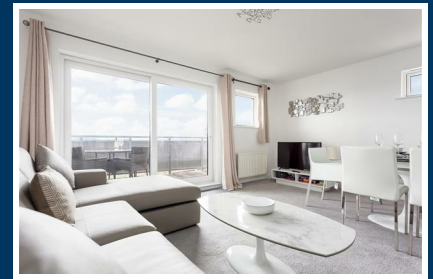
Two bedroom apartment situated on the Harbour Reach development just south of Poole lifting bridge benefiting from a balcony with stunning harbour views with the Purbecks in the distance. Located just opposite Hamworthy beach and park, only a few minutes walk away, and 10 minutes walk to Poole Quay and the town with all its facilities.

Lift and level access. Open plan Lounge / Dining area leading to a balcony with beautiful harbour views. Comprehensively equipped throughout. Fully fitted kitchen including electric oven and hob, Fridge / Freezer, Dishwasher, Microwave and Washer / Dryer and 1.5 bowl sink. Master Bedroom (5ft kingsize double) with Juliette balcony windows onto mezzanine raised planted area and benefiting from ensuite bathroom (shower cubicle, sink and toilet). Second bedroom (3ft twin beds or zip and link 6ft superkingsize double). Family bathroom (bath with shower over, toilet and sink).









Energy Efficiency Rating		
	Current	Potential
Very energy efficient - lower running costs		
(92 plus) <b>A</b>		
(81-91) <b>B</b>		
(69-80) <b>C</b>		
(55-68) <b>D</b>		
(39-54) <b>E</b>		
(21-38) <b>F</b>		
(1-20) <b>G</b>		
Not energy efficient - higher running costs		
England & Wales EU Directive 2002/91/EC		

Agent Note: Whilst every care has been taken to prepare these sales particulars, they are for guidance purposes only. All representations including descriptions, dimensions and photos are given, in good faith and are believed to be correct, but any intending purchaser should not rely on them as statements or representations of fact but must satisfy themselves as to their correctness. Appliances and central heating systems have not been checked by Quay Living or their employees and we recommend that purchasers instruct a qualified person to check all appliances / service before legal commitment.

01202 683444  
Orchard Plaza, 41 High Street  
Poole, Dorset, BH15 1EG  
[www.quayliving.co.uk](http://www.quayliving.co.uk)

